



# DL Series Engine Dynamometers

Engine Dynamometer



## Durability

Taylor Dynamometer's water brake style engine dynamometers are known for their longevity. Taylor builds every one of its products with heavy-duty components and then supports each with legendary service. The end result is a track record of proven durability and satisfied customers.

Taylor Dynamometer has been manufacturing waterbrake (hydraulic) style dynamometers since the 1920's. Commonly referred to as hydraulic dynamometers, waterbrake dynamometers are particularly well suited for steady state, step, sweep and moderate to slow transient testing requirements. Waterbrake style engine dynamometers are known to have a low acquisition cost, low inertia, require limited maintenance and provide excellent durability.

## Performance

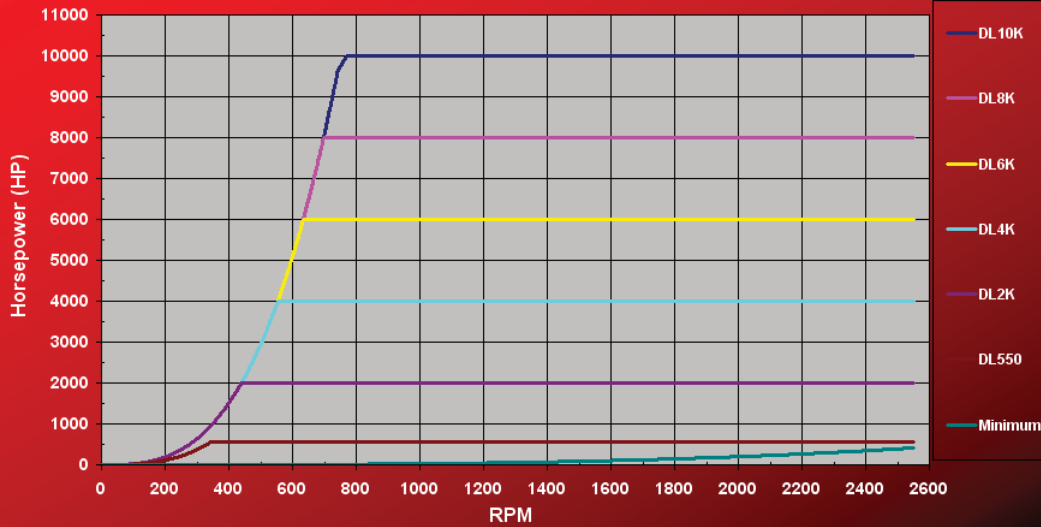
The rotating torque from the prime mover is absorbed by the turbulence (water shear and momentum exchange) of the water within the dynamometer. This braking action or load is developed by a rotor that directs the water against the stator. The stator in turn redirects the water back against the rotor, thereby, opposing the motion of the rotor. The greater the flow of the water through the dynamometer, the greater the braking action or load on the prime mover.

## The DL Series of Dynamometers

Our DL series includes 6 different models all sharing a similar design and construction.

Model	Max Speed	Max Power
DL550	2550	550hp (410kw)
DL2K	2550	2,000hp (1491kw)
DL4K	2550	4,000hp (2983kw)
DL6K	2550	6,000hp (4474kw)
DL8K	2550	8,000hp (5966kw)
DL10K	2550	10,000hp (7457kw)

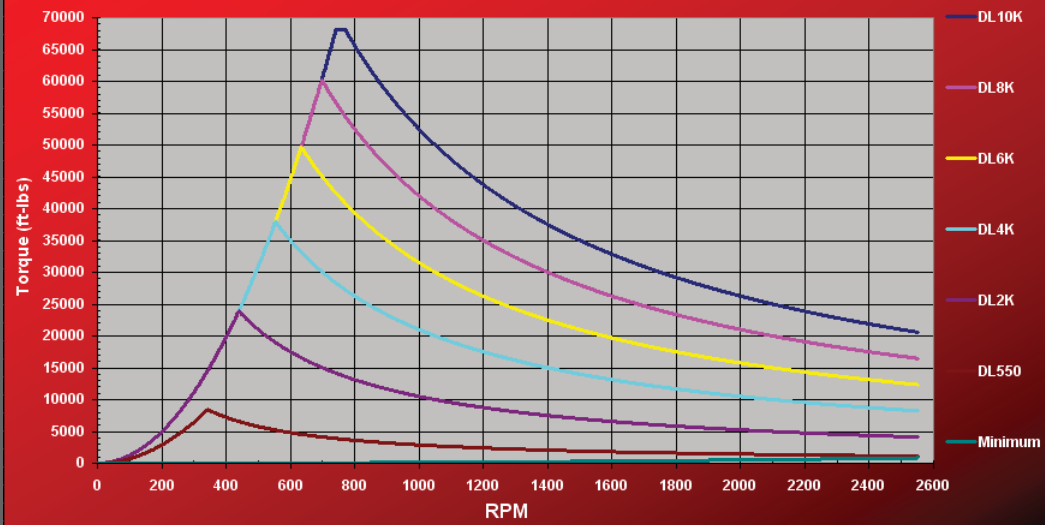
Taylor DL Series Horsepower Curve , English



The DL series accommodates power ranges from as little as 55hp to 10,000hp (41kW to 7,457kW) and can operate at up to 2,550 rpm.

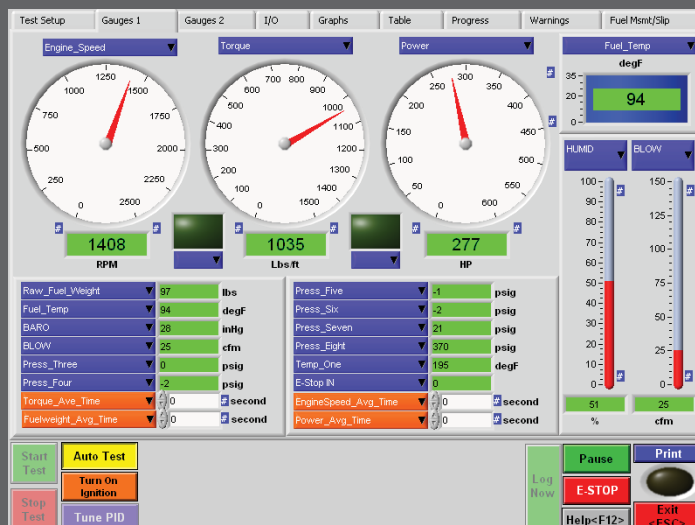
With peak torque of up to 68,109 ft-lbs (92,344 Nm)

Taylor DL Series Torque Curve, English



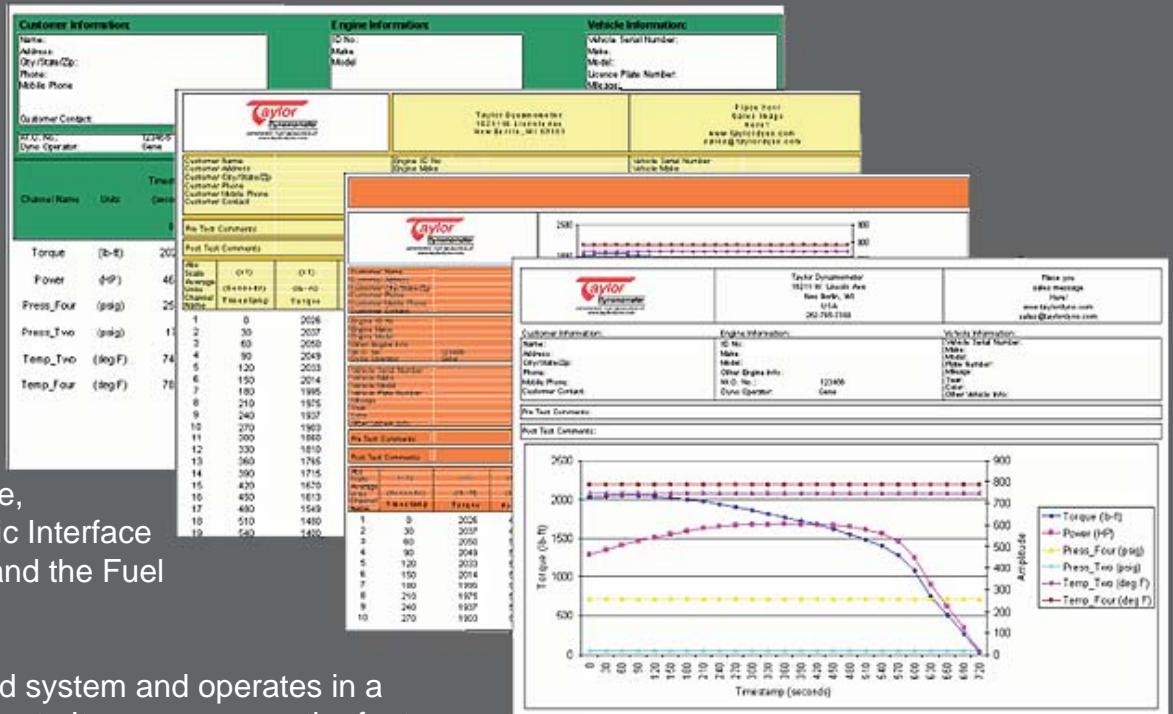
## DynPro Data Acquisition & Control System

The making of a truly exceptional dynamometer system requires an exceptional dynamometer data acquisition and control system.



DynPro provides the flexibility and control required in today's challenging test environment, gives the operator complete control of the dynamometer functions and provides comprehensive data acquisition.

DynPro controls and acquires the data from the many accessories that compliment Taylor's DynPro system, including the Smoke Opacity Meter, the Emissions Gas Analyzer, the Pressure and Temperature Package, Heavy-Duty Electronic Interface (for ECM channels) and the Fuel Measurement Unit.



DynPro is a PC based system and operates in a Windows™ environment. It encompasses the features of a lab grade control system and still delivers an operator friendly point and click interface.

### Accessories

On each of our engine dynamometers, Taylor provides the option of including: driveshafts, torsional couplings, flywheel adapter plate kits, shaft guards, prefab sub-bases and more.

Taylor Dynamometer offers a full compliment of accessories to support your testing requirements.



Ask a Sales Representative for information on accessories such as:

- \*Driveshaft
- \*Exhaust System
- \*Cooling Column
- \*Hose Kit
- \*Charge Air Cooler
- \*Water Recirculation System
- \*Air Handling (HVAC) System
- \*Modular Sound Proof Test Cell
- \*Flywheel Adapter Kit
- \*Sub-base
- \*Guard
- \*Engine Cart

and more....